



| | | | |
|-----------------|---------------|-------------|---------------|
| Part Number | Package | Application | Last Modified |
| 803-RF1003.0M-A | 3.0 x 3.0 SMD | Wireless | Jan. 01, 2007 |

TYPE :
Wireless, RF SAW Filter



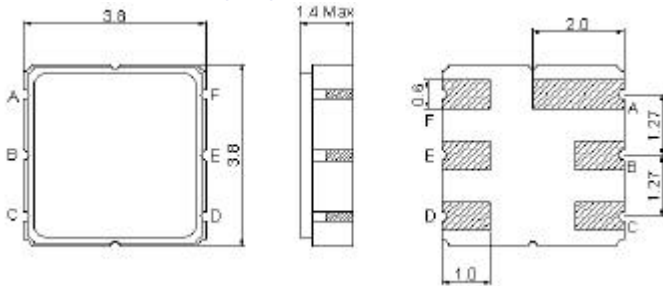
PART NUMBER :
803-RF1003.0M-A

OPERATING CONDITIONS / ELECTRICAL CHARACTERISTICS

| PARAMETERS | Condition | Minimum | Typical | Maximum | Units |
|----------------------------------|--------------------|---------|---------|---------|--------|
| Center Frequency (Fo) | - | - | 1003.0 | - | MHz |
| Maximum Insertion Loss | 988.0~ 1018.0 MHz | - | 3.5 | 4.5 | dB |
| Stop Band Attenuation: | D.C.~ 942.0 MHz | 50 | 60 | - | dB |
| | 942.0~ 964.0 MHz | 40 | 50 | - | |
| | 964.0~ 967.0MHz | 40 | 50 | - | |
| | 1039.0~ 1040.0 MHz | 13 | 23 | - | |
| | 1040.0~ 1084.0 MHz | 15 | 25 | - | |
| | 1084.0~ 1559.0 MHz | 35 | 50 | - | |
| | 1559.0~ 3000.0 MHz | 20 | 28 | - | |
| Amplitude Ripple | 988.0~ 1018.0 MHz- | - | 1.5 | 2.5 | dBmp-p |
| Source Impedance (single ended)* | - | - | 50 | - | ohm |
| Load Impedance (single ended)* | - | - | 50 | - | ohm |
| VSWR | 988.0~ 1018.0 MHz | - | 2.3 | 2.7 | - |
| Maximum DC Voltage | - | - | - | 10 | V |
| Maximum Input Power | - | - | - | 10 | dBm |
| Operating Temperature | - | -30 | - | +85 | °C |

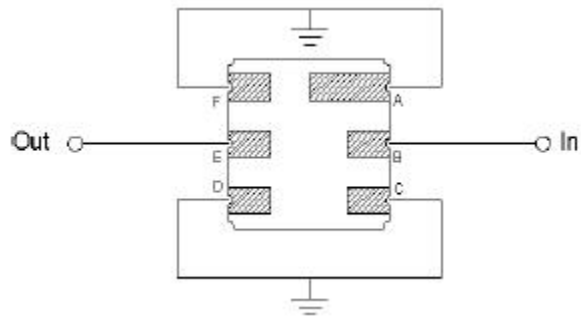
* No Matching Network

PACKAGE OUTLINE (mm)



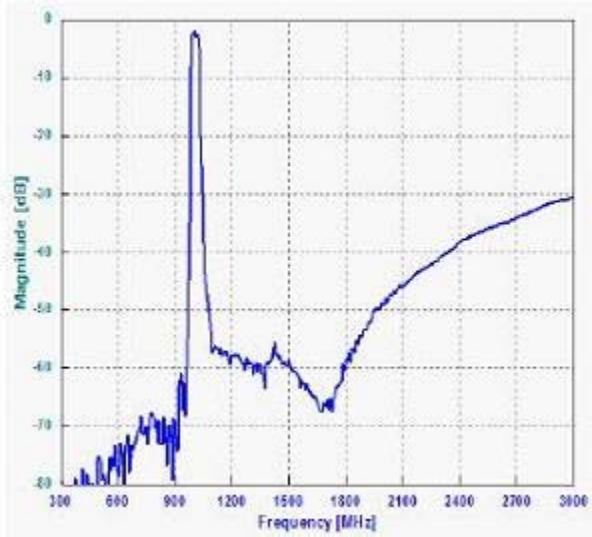
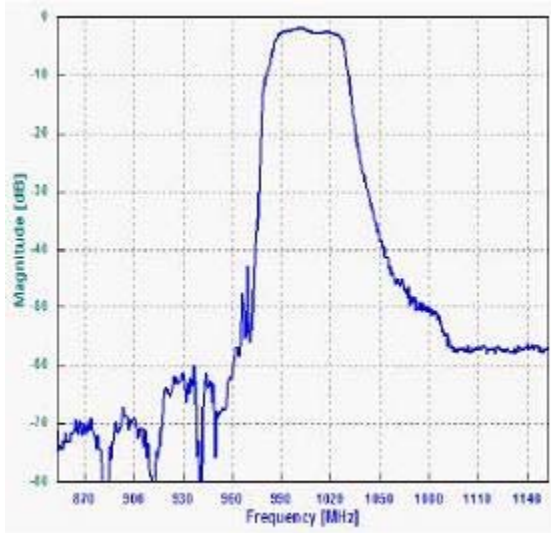
| PIN LAYOUT | |
|------------|--------|
| A | Ground |
| B | In |
| C | Ground |
| D | Ground |
| E | Out |
| F | Ground |

TEST FIXTURE

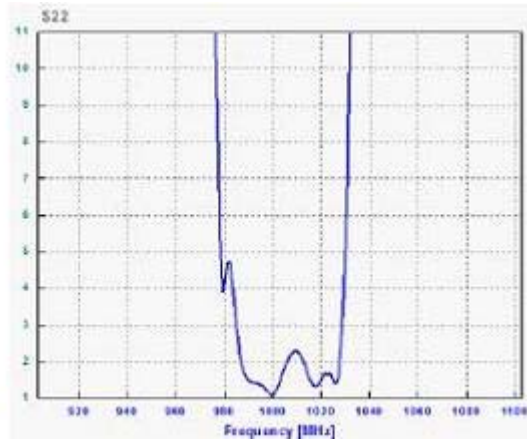
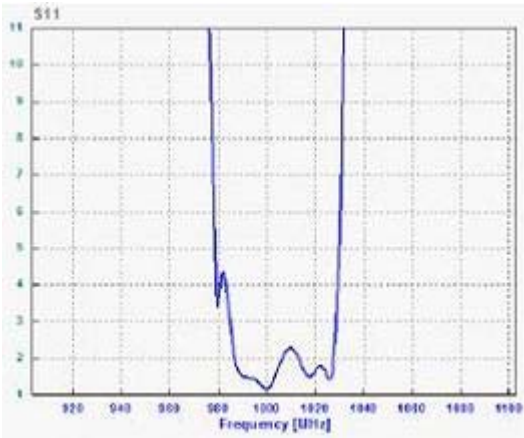


Source/ Load Impedance = 50 ohms

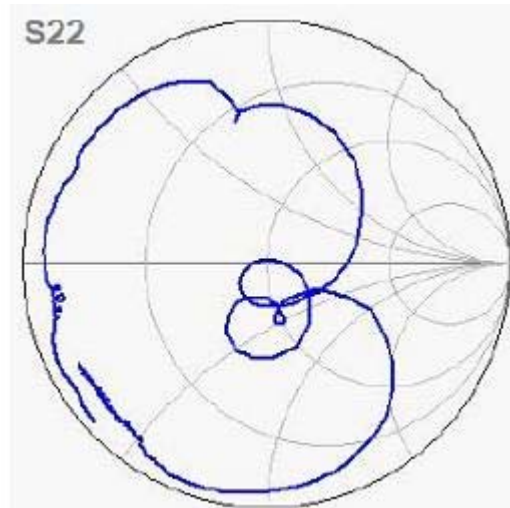
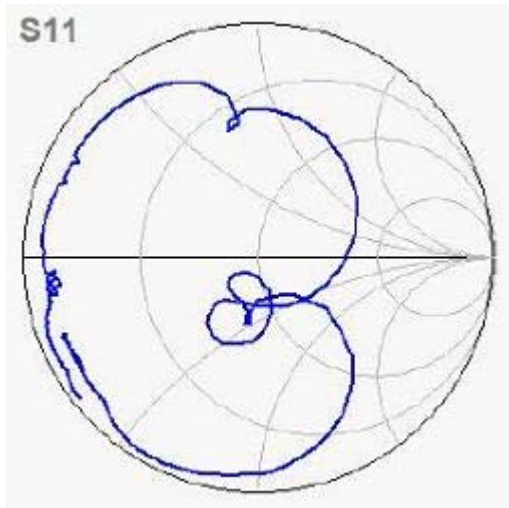
FREQUENCY RESPONSE



VSWR



SMITH CHART



Oscilent Corporation - CALL **949.252.0522**
18195 East McDermott Street , Building D , Irvine , CA 92614 , USA
Fax: 949.252.0599 , E-Mail: Sales@Oscilent.com

Part No.: **803-RF1003.0M-A**